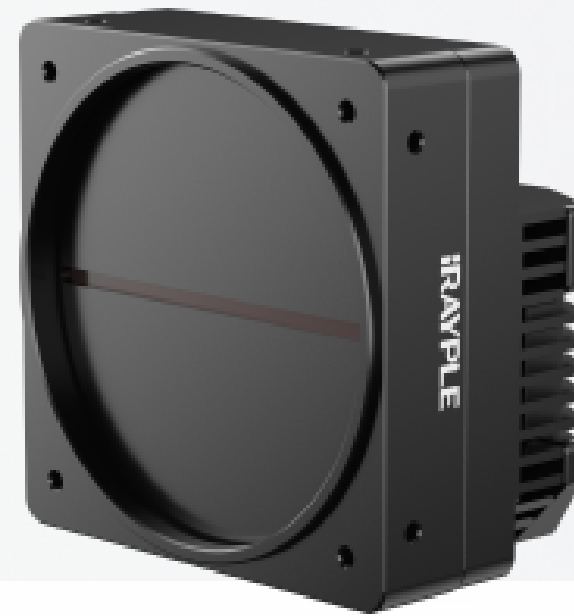


5000 series

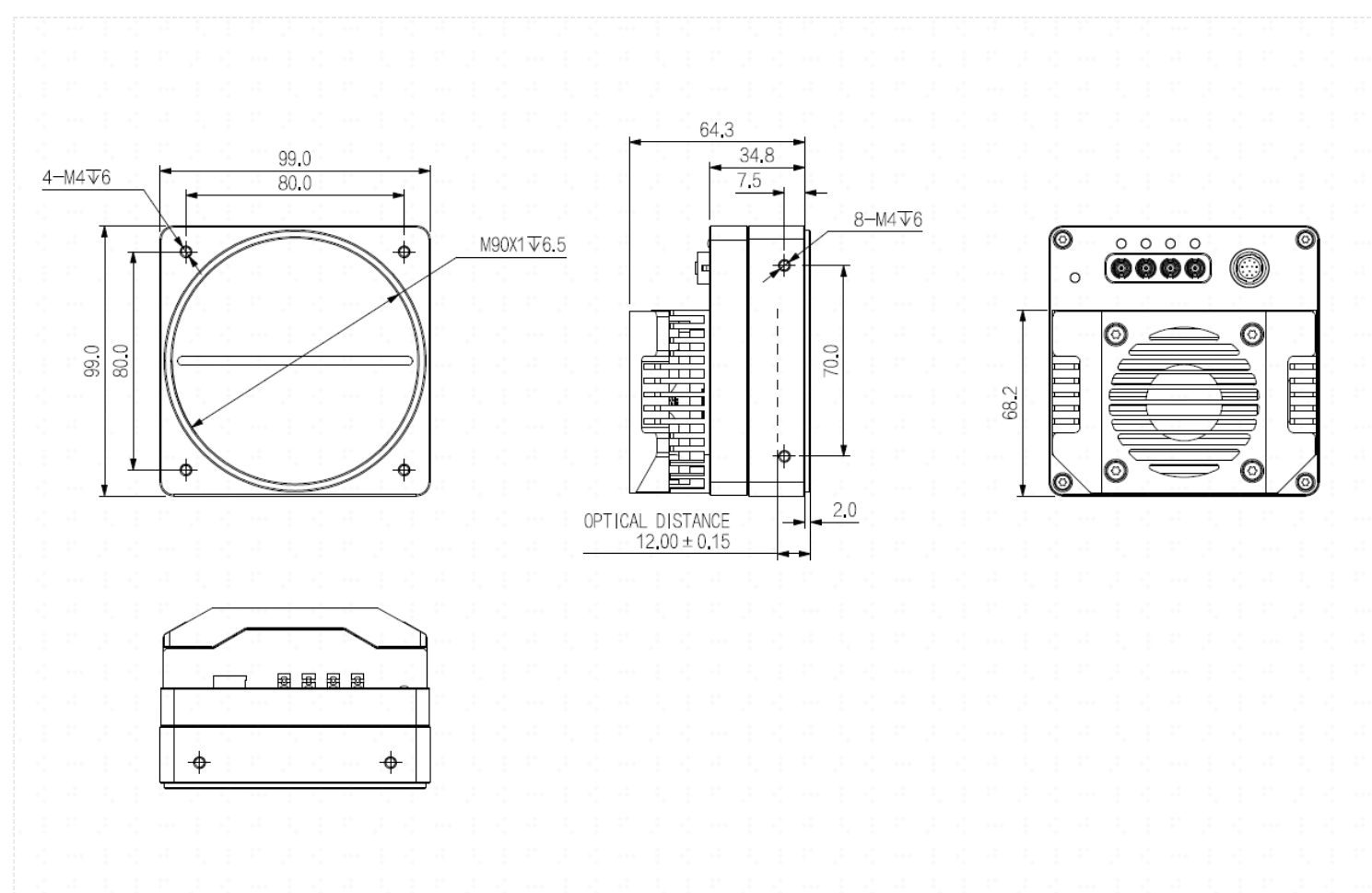
L5167MPA90E



Features

- CoaxPress uses CXP-12, with a theoretical bandwidth of 4*12.5Gbps;
- Support 2TD, 4TDI, 8TDI, 16TDI modes
- Support Software Trigger/Hardware Trigger/Free Run mode;
- Support user-defined ROI, horizontal mirror;
- Support PoCXP and DC 24V power supply;
- Conforms to CoaXPress protocol and GenICam standard;
- Conform to CE、KC and RoHS;

Dimensions (mm)



Specification

Model		L5167MPA90E
Basic	Image Sensor	CMOS
	Shutter	Global
	Resolution	16384 × 16
	Line Rate	265kHz(1-Line)、132 kHz(2-TDI)、66 kHz(4-TDI)、33 kHz(8-TDI)、16 kHz(16-TDI)
	Bit Depth	12bit
	Mono/Color	Mono
	Pixel Size	5 μm × 5 μm
Image	S/N Ratio	39.5dB
	Dynamic Range	57.7dB
	Image Format	Mono8/Mono10/Mono12
	Binning	Support
	ROI	Support
	X Flip	Support
	Gain	1~32
	Exposure Time	3μs~100ms
	Trigger Mode	Software Trigger/Hardware Trigger/Free Run Mode
	FPN	Support
Performance	User Setting	Support three sets of user-defined configurations
Port	Port	CXP-12
	GPIO Interface	4 differential input,output and 1 GPIO input,output
	Lens Mount	M90*1, flange back focus 12 mm; can be transferred to F-mount lens via adapter ring
Power	Power Supply	Powered by 12-pin Hirose interface, DC24V, supports PoCXP
	Power Consumption	23W @24 VDC
Structure	Product Dimensions	99 mm × 99 mm × 65 mm (Non including rear case connector)
	Net Weight	About 930g
Environment	Storage Temperature	-30°C~+80°C
	Operating Temperature	-30°C~+50°C